



#### TECHNICAL INFORMATION

Input Power:	AC:220-240V, 50Hz
Unit Color:	Stainless Steel
Body Type:	Stainless Steel
Operation Temperature:	-25°C to +50°C
Rated Load:	Max 35Wx2
Dimension:	93x85x163mm

#### GU10 UP DOWN FITTINGS | LED LIGHTING

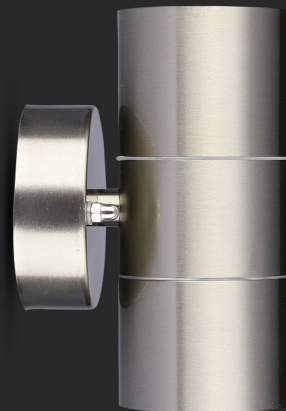
V-TAC's LED Lighting range includes lighting that fulfills the needs of various end-users and industries, offering efficient and innovative products that provide modern solutions at an affordable price. We are proud to also provide an extended multi-year warranty on our products, as well as detailed support.

*One brand, endless solutions..*

SKU: 7500 - 1256

[View more details](#)

## WALL LIGHT FITTING



Compatible with any standard **GU10** lamp.  
\*Lamps are not included



#### FEATURES

- Perfect replacement for traditional wall fittings
- Strong and sturdy Stainless Steel body
- Compatible with 2XGU10 holder type (Fitting only - light not included)
- Elegant Stainless Steel colour finish
- Suitable for pathways, stairways, corridors, walkways etc.

CE/EMC

CE/LVD



#### PACKAGING

Gross Weight (Kgs):	0.69
Unit CBM:	0.001785
Dimension:	93x85x163mm

#### MASTER BOX PACKAGING

Box Qty:	16
Qty Per Pallet:	560
Length (Box) mm:	100
Width (Box) mm:	170
Height (Box) mm:	105

#### LISTING DETAILS

Commodity Code:	9405409990
Ean Code:	3800157617598